

ab112133

**JC-10 Mitochondrial
Membrane Potential
Assay Kit – Flow
Cytometry**

Instructions for Use

For detecting mitochondrial membrane potential changes in cells using our proprietary fluorescence probe.

[View kit datasheet: www.abcam.com/ab112133](http://www.abcam.com/ab112133)

(use www.abcam.cn/ab112133 for China, or www.abcam.co.jp/ab112133 for Japan)

This product is for research use only and is not intended for diagnostic use.

Table of Contents

1.	Introduction	3
2.	Protocol Summary	5
3.	Kit Contents	6
4.	Storage and Handling	6
5.	Assay Protocol	7
6.	Data Analysis	9
7.	Appendix	11

1. Introduction

Although JC-1 is widely used in many labs, its poor water solubility causes great inconvenience. Even at 1 μ M concentration, JC-1 tends to precipitate in aqueous buffer. JC-10 is developed to be a superior alternative to JC-1 when high dye concentration is desired. Compared to JC-1, JC-10 has much better water solubility. JC-10 is capable of selectively entering into mitochondria, and reversibly changes its color from green to orange as membrane potentials increase. This property is due to the reversible formation of JC-10 aggregates upon membrane polarization that causes shifts in emitted light from 520 nm (i.e., emission of JC-10 monomeric form) to 570 nm (i.e., emission of J-aggregate form). When excited at 490 nm, the color of JC-10 changes reversibly from green to greenish orange as the mitochondrial membrane becomes more polarized. Both colors can be detected using the filters commonly mounted in all flow cytometers. The green emission can be analyzed in fluorescence channel 1 (FL1) and greenish orange emission in channel 2 (FL2). Besides its use in flow cytometry, it can also be used in fluorescence imaging and fluorescence microplate platform.

ab112133 is based on the detection of the mitochondrial membrane potential changes in cells by the cationic, lipophilic JC-10 dye. In normal cells, JC-10 concentrates in the mitochondrial matrix where it forms red fluorescent aggregates. However, in apoptotic and

necrotic cells, JC-10 exists in monomeric form and stains cells green.

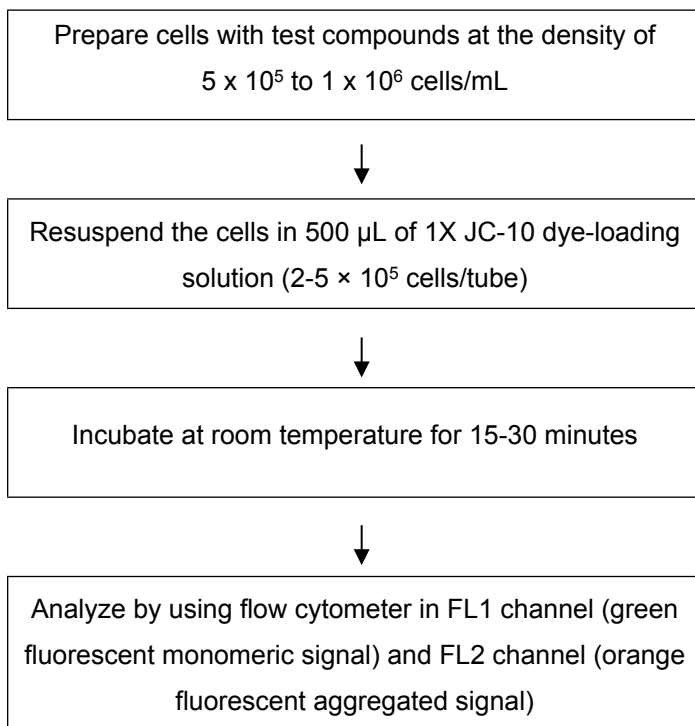
ab112133 is optimized to screen both apoptosis activators and inhibitors using flow cytometry while ab112134 is offered for microplate-based high throughput screening applications.

Kit Key Features

- **Increased Signal Intensity:** Larger assay window
- **Increased Solubility:** Much better water solubility than JC-1
- **Convenient:** Formulated to have minimal hands-on time
- **Versatile Applications:** Compatible with many cell lines and targets

2. Protocol Summary

Summary for Flow Cytometer



Note: Thaw all the kit components to room temperature before starting the experiment.

3. Kit Contents

Components	Amount
Component A: 200X JC-10 in DMSO	1 x 250 µL
Component B: Assay Buffer	1 x 50 mL

4. Storage and Handling

Keep at -20°C. Avoid exposure to light.

5. Assay Protocol

A. Preparation of Cells

Prepare cells at the density from 5×10^5 to 1×10^6 cells/mL.

Note: Each cell line should be evaluated on the individual basis to determine the optimal cell density for apoptosis induction.

B. Preparation of JC-10 dye-loading solution

1. Thaw all the kit components at room temperature before use.
2. Add 25 μ L of 200X JC-10 (Component A) into 5 mL Assay Buffer (Component B), and mix well.

Note: Aliquot and store the unused Component A at -20°C . Avoid repeated freeze/thaw cycles.

C. Run JC-10 Assay

3. Treat cells with test compounds for a desired period of time to induce apoptosis. Set up parallel control experiments.

For Negative Control: Treat cells with vehicle only.

For Positive Control: Treat cells with FCCP or CCCP at 2-10 μM in a 37 °C, 5% CO_2 incubator for 15 to 30 minutes.

Note: CCCP or FCCP can be added simultaneously with JC-10 dye-loading solution (from Step B.2). Titration of the CCCP or FCCP may be required for optimal results with an individual cell lines.

4. Centrifuge the cells to get $2-5 \times 10^5$ cells per tube.

Note: For adherent cells, gently detach the cells with 0.5 mM EDTA, which is gentler than trypsinization. Wash the cells once with serum-containing media prior to incubation with JC-10 dye-loading solution (see StepC.3).

5. Resuspend cells in 500 μL of JC-10 dye-loading solution (from Step B.2).
6. Incubate the dye-loading cells at room temperature or in a 37°C, 5% CO_2 incubator for 15-60 minutes, protected from light.

Note: The appropriate incubation time depends on the individual cell type and cell concentration used. Optimize the incubation time for each experiment.

7. Monitor the fluorescence intensity by using a flow cytometry in FL1 channel for the green fluorescent monomeric signal (in apoptotic cells), and the FL2 channel for the orange fluorescent aggregated signal (in healthy cells). Gate on the cells, excluding debris. It is recommended that compensation corrections be performed using the FCCP or CCCP-treated cells (**See Appendix**).

6. Data Analysis

1. In live non-apoptotic cells, JC-10 exists as a monomer in the cytosol stained green, and also accumulates as aggregates in the mitochondria stained red. In apoptotic and dead cells, JC-10 exists in the monomeric form only, staining the cytosol green.
2. Mitochondria containing red JC-10 aggregates in healthy cells are detectable by using the FL2 channel. Green JC-10 monomers in apoptotic cells are detectable by using the FL1 channel (FITC).
3. The intensity ratio of FL1 to FL2 is used to monitor the mitochondria membrane potential change induced by the compounds treatment.

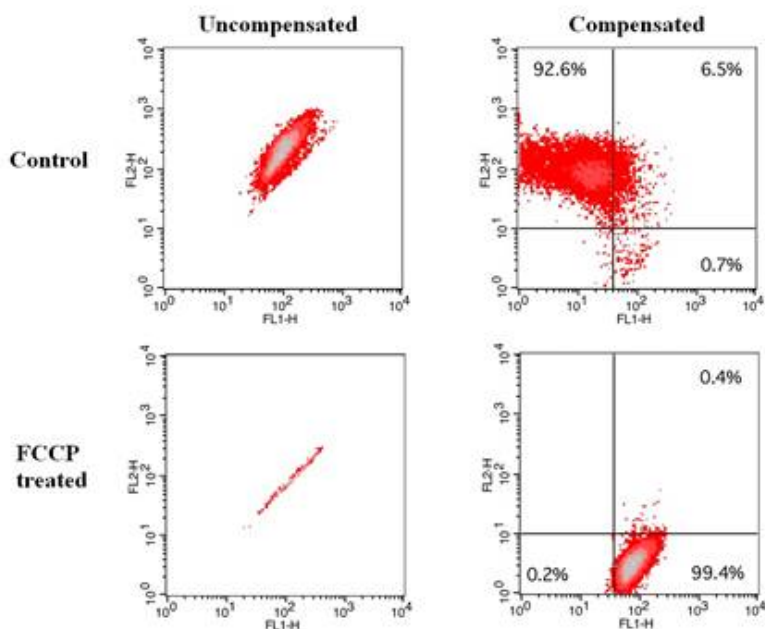


Figure 1. Effect of FCCP induced mitochondria membrane potential change in Jurkat cells. Jurkat cells were dye loaded with JC-10 dye working solution along with DMSO (Top) or 5 μ M FCCP (Low) for 10 minutes. The fluorescence intensities for both J-aggregates and monomeric forms of JC-10 were measured with a FACSCalibur (Becton Dickinson) flow cytometer using FL1 and FL2 channels. Uncompensated data (left column) were compared with compensated data (right column).

7. Appendix

- A. Typical Flow Cytometer settings** for the analysis of JC-10 on a flow cytometer are as follows. Suggested initial conditions may require modifications because of differences in cell types and culture conditions, and also the individual instrumentation.

FL1 PMT voltage 366

FL2 PMT voltage 430

Compensation: FL1 – 47.2% FL2; FL2 – 47.0% FL1

B. Two-Parameter Analysis

1. Run the negative control cells (cells with vehicle treated only) first. Generate a log FL1 (X-axis) versus log FL2 (Y-axis) dot plot. Set PMT for FL1 and FL2 channels so both green and orange signals will fall between the 2nd and the 3rd log decade scale of FL1 and FL2. Set up quadrant gate to have a dual positive cell population in the upper right quadrant.
2. The gate should be adjusted according to the conditions of the cells.
3. Adjust compensation values.

Note 1: The green JC-10 dye signal fluoresces mostly in the FL1 channel, but bleeds over into FL2 channel. This needs to be compensated (see Figure 1). To compensate, subtracting the FL1 bleed from FL2 ($FL2 - \% FL1$). As the % compensation is increased, the green population was subtracted from the FL2 channel (double positive top right quadrant Figure 1-A) and placed in a single positive quadrant Figure 1-B.

Note 2: Do not overcompensate. The FL2 background intensity of the negative control cells should be the same as that of a negative population (Figure 1-C).

Note 3: Compensate for any bleed from the orange channel into the green channel ($FL1 - \% FL2$).

4. Run the induced cells (positive control), using the PMT settings established above for the negative control cells. A population of cells should appear in lower right quadrant. This reflects a loss of red emission on the FL2 axis, which corresponds to the loss of mitochondrial membrane potential in induced cells.

Note1: Do not change voltage after the compensation, any further voltage changes may unbalance the compensations and the process will have to be repeated.

Note 2: The PMT settings for this assay may be low due to the strong fluorescence signals. Verify compensation values for each new experiment, or at least for each new cellular system tested.

Note 3: If the induced cells exhibit only a minimal decrease in red emission as compared to the negative control cells, increase the FL2 - % FL1 compensation.

For further technical questions please do not hesitate to contact us by email (technical@abcam.com) or phone (select “*contact us*” on www.abcam.com for the phone number for your region).

UK, EU and ROW

Email:

technical@abcam.com

Tel: +44 (0)1223 696000

www.abcam.com

US, Canada and Latin America

Email: us.technical@abcam.com

Tel: 888-77-ABCAM (22226)

www.abcam.com

China and Asia Pacific

Email: hk.technical@abcam.com

Tel: 400 921 0189 / +86 21 2070 0500

www.abcam.cn

Japan

Email: technical@abcam.co.jp

Tel: +81-(0)3-6231-0940

www.abcam.co.jp